

• • • ept
connectors



Connectors
product overview

Editorial



Good connections have a name: ept



Claus
Guglhör

Bernhard
Guglhör

Thomas
Guglhör

ept designs, produces and distributes electronic connectors for high quality applications. Founded by Bernhard Guglhör over 45 years ago, we are proud to remain an independent and family owned company. Today, we employ about 1,200 people at six locations worldwide.

Over decades we have built trusting and successful partnerships with our customers, who are our primary focus. Our products and core competencies are used in high-level applications.

With our motto "Precision with Passion" ept stands for the highest quality and reliability under the personal and individual touch of dedicated employees.

We are looking forward to working with you.
Your ept-Team

Contents



Here you will find everything.

Zero8	6
Colibri [®] - COM Express [®]	8
One27 [®] - 1.27 mm SMT.....	10
DIN 41612.....	12
EC.8.....	14
flexilink b-t-b	16
flexilink jumper	17
VarPol pin header and socket connectors	18
PC/104, PC/104-Plus	19
Advanced TCA [®]	20
MicroTCA [®]	21
hm2.0	22
Velox [®]	23
Power supplies	24
Assembly machines & tools	25
Customized connectors.....	26

Symbols



Definitions

Mating Configurations



Parallel



Perpendicular



Horizontal



Edge Card



Cable-to-Board

Type of Termination



SMT



Press-fit



Through-Hole



Wire Wrap

Application



High Density



Power



HighSpeed



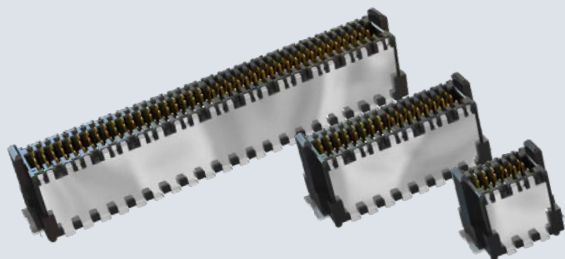
EMC



Rugged



Variability



Zero8

0.8 mm SMT for Board-to-Board Applications

Key Features

Types	see overview
Pitch	0.8 mm
Termination technology	SMT
Data transfer rate	up to 16 Gbps
Durability	500 mating cycles
Operational current	max. 1.4 A at 20°C (52 pins)
Approvals	UL, RoHS compliant

Applications

Board-to-Board (mezzanine) from 6 mm up to 21 mm

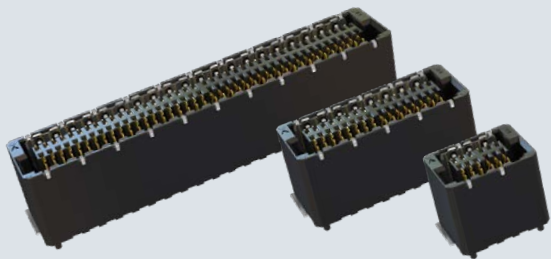
Parallel and perpendicular connection

Shielded and unshielded versions



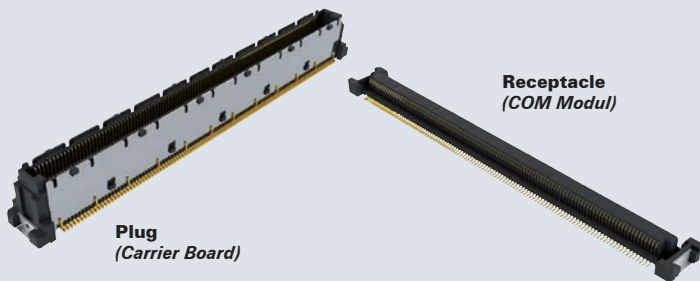
Characteristics

- Versatile through different types, contact numbers and board-to-board distances
- Small through dense pitch
- Shielding for better EMC properties
- HighSpeed up to 16 Gbps



Overview Zero8

Type		Height	Number of pins	Mating configuration
	Plug Socket low-profile	shielded 1.15 mm 4.85 mm	12 ... 80	Parallel Perpendicular
	Plug Socket mid-profile	shielded 2.65 mm 7.85 mm	12 ... 80	Parallel Perpendicular
	Plug Socket (coming soon) high-profile	shielded 7.15 mm 10.85 mm	12 ... 80	Parallel Perpendicular
	Plug x-high	shielded 8.65 mm	12 ... 80	Parallel Perpendicular
	Plug Socket angled	shielded	12 ... 80	Horizontal Perpendicular
	Plug Socket low-profile	unshielded 1.15 mm 4.85 mm	12 ... 80	Parallel Perpendicular
	Plug Socket mid-profile	unshielded 2.65 mm 7.85 mm	12 ... 80	Parallel Perpendicular
	Plug Socket (coming soon) high-profile	unshielded 7.15 mm 10.85 mm	12 ... 80	Parallel Perpendicular
	Plug x-high	unshielded 8.65 mm	12 ... 80	Parallel Perpendicular
	Plug Socket angled	unshielded	12 ... 80	Horizontal Perpendicular



HighSpeed Connectors for COM Express®

Key Features

Types	Receptacle (COM Module) Plug 8 mm } (Carrier Board) Plug 5 mm }
Number of contacts	220 or 440
Pitch	0.5 mm
Termination technology	SMT
Data transfer rate	10 Gbps & 16 Gbps
Approvals	UL, RoHS compliant

Applications

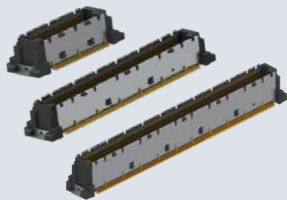
COM Express® for 5 mm & 8 mm distance
Core Express®

COM Express®

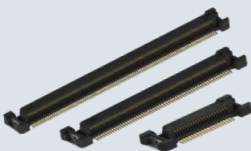
Characteristics

- Intermatability with other manufacturers
- Applications up to 16 Gbps and more possible
- Robust connector design
- Packed in tape & reel or tray

Plug



Receptacle



Flexibility for HighSpeed Board-to-Board

Key Features

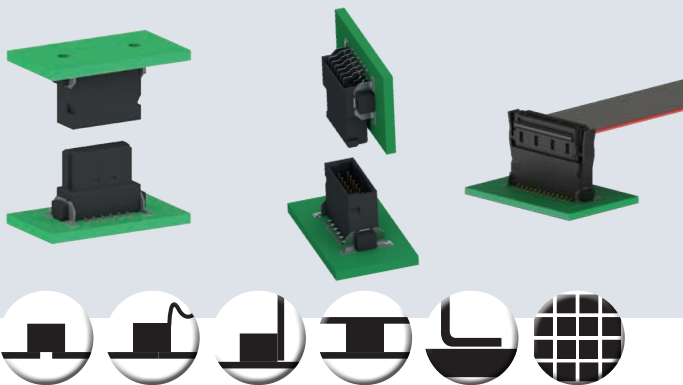
Types	Receptacle Plug 5 mm Plug 8 mm
Number of contacts	40, 80, 120, 160
Pitch	0.5 mm
Termination technology	SMT
Data transfer rate	10 Gbps
Approvals	UL, RoHS compliant

Applications

HighSpeed board-to-board
5 mm & 8 mm board-to-board distance
Computer on Module (COM)
16 Gbps optional

Characteristics

- Applications up to 16 Gbps and more
- Individual number of contacts possible
- Robust connector design
- Packed in tape & reel or tray



One27®

1.27 mm SMT for Board-to-Board

Key Features

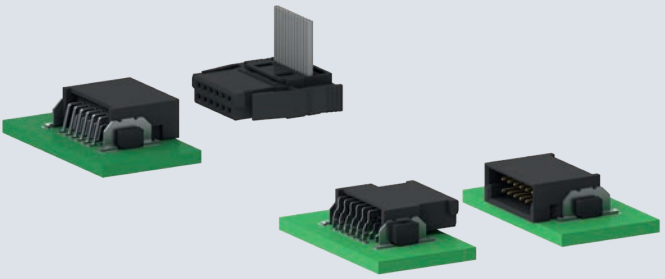
Types	see overview
Pitch	1.27 mm
Termination technology	SMT
Durability	500 mating cycles
Operational current	max. 1.4 A at 20°C (50 pins)
Approvals	UL, RoHS compliant

Applications

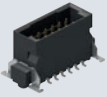



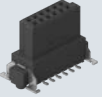



Board-to-board from 8 mm up to 13.8 mm
 Parallel and perpendicular connection
 IDC link with ribbon cable

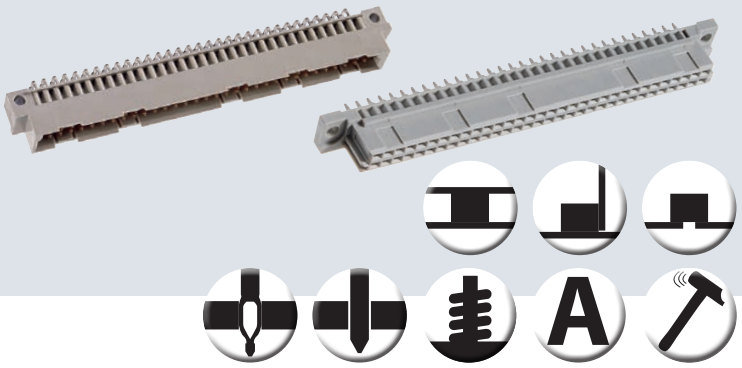
Characteristics

- Versatile through different types and contact numbers
- Small through dense pitch
- Robust through high quality contact design, SMT-fixing, anti-twist protection, insertion chamfers



Overview One27

Type	Height	Number of pins	Mating configuration
	1.75 mm	12 ... 80	Parallel Perpendicular Cable
	3.25 mm	12 ... 80	Parallel Perpendicular Cable
		12 ... 80	Horizontal Perpendicular Cable
	6.25 mm	12 ... 80	Parallel Perpendicular
	9.05 mm	12 ... 80	Parallel Perpendicular
		12 ... 80	Horizontal Perpendicular
		12 ... 80	Cable
		12 ... 80	Cable



DIN 41612

High Variety - Reliable - Well-proven

Key Features

Types	See overview
Durability	500, 400 or 50 mating cycles
Operational current	1.5 A to 15 A at 20°C
Approvals	UL, RoHS compliant, NFF
Termination technology	Press-fit, solder, THR

Applications

Backplane - daughtercards, 19-inch technology (VME)

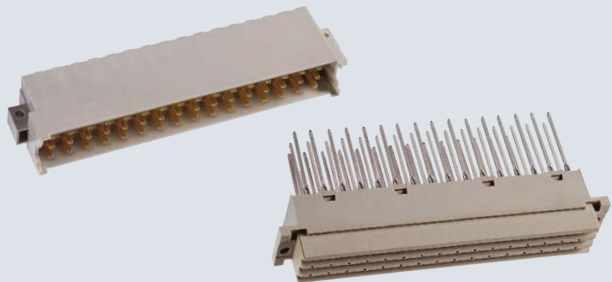
Board-to-board or horizontal

High current



Characteristics

- Reliable and proven connector system
- Special contact arrangements possible, even for low quantities
- Pre-mating and late-mating contacts possible
- Different contact lengths available
- Accessories: Shroud, Board Lock, Coding Keys
- Switching connector for daisy-chaining



Overview of ept's DIN 41612

Type	Pitch (mm)	max. Number of Contacts	Termination Technology
B, B/2, B/3	2.54	64 / 32 / 20	press-fit, solder, THR, Wire Wrap
C, C/2, C/3	2.54	96 / 48 / 30	press-fit, solder, THR, Wire Wrap
IDC (B/C)	2.54	64 / 96	IDC
Q, Q/2	2.54	64 / 32	solder
R, R/2, R/3	2.54	96 / 48 / 30	press-fit, solder, THR, Wire Wrap
M, M/2, M/3	2.54	78 / 30 / 12	press-fit, solder
D	5.08	32	press-fit, solder, Wire Wrap
E	5.08	48	press-fit, solder, Wire Wrap
F, F low	5.08	48	press-fit, solder, THR, Wire Wrap
G, G low	5.08	64	press-fit, solder, Wire Wrap
H11, H11 low	5.08	11	solder, faston
H15, H15 low	5.08	15	solder, faston
H7/F24	5.08	7+24	solder
VME 64x	2.54	160	press-fit



EC.8

0.8 mm SMT - Edge Card Connector

Key Features

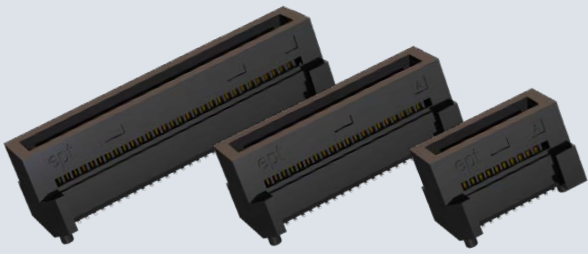
Types	see overview
Pitch	0.8 mm
Termination technology	SMT
Data transfer rate	up to 28 Gbps
Durability	500 mating cycles
Operational current	3,2A @ 20°C (8 of 140 pins) 1,35A @ 20°C (140 pins)
Approvals	UL, RoHS compliant

Applications

HighSpeed Edge Card Connection

Characteristics

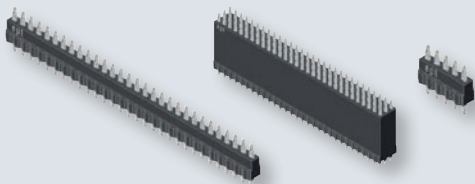
- Versatile pin count variations
- Compact pitch design
- Anti-twist safeguard for pin counts 60 to 200
- HighSpeed transfer rates up to 28 Gbps



Overview EC.8

	Type	Height	Number of pins	Mating configuration
	Direct Connector (without key)	2.05 mm	20 ... 60	Perpendicular Edgecard
	Direct Connector (with key)	2.05 mm	60 ... 200	Perpendicular Edgecard





flexilink board-to-board Solid and Permanent Connection in Press-fit

Key Features

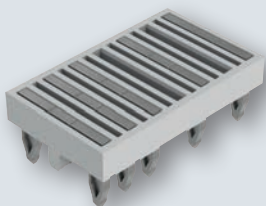
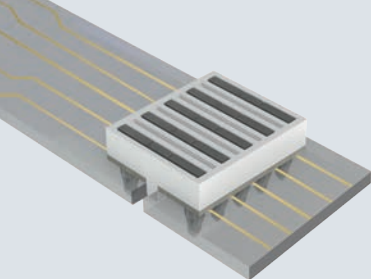
Types	Straight, permanent connection with 1 to 3 rows
Stack height	5 - 25 mm
Number of contacts	2 - 90
Pitch	2.54 mm
Termination technology	Press-fit
Approvals	UL, RoHS compliant

Applications

Machine tools, agricultural engineering, automotive, intralogistics, crane technology, propulsion technology

Characteristics

- Reliable mechanical and electrical connection
- Space & cost saving, replaces spacer
- Single-component connection
- Individual board-to-board distances possible
- 11A operational current per pin
- Press-fit zone with Tcom press®



flexilink_{jumper}

Reliable, Small and Easy for LED and more

Key Features

Types	Permanent
Number of contacts bridges	2 - 15
Pitch	2 mm or 4 mm
Termination technology	Press-fit
Operational current	11 A at 20°C (5 contact bridges) per pin
Approvals	UL, RoHS compliant

Applications

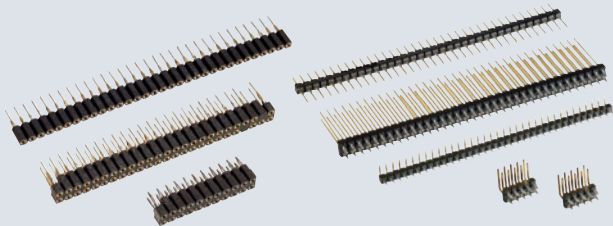
Horizontal PCB connection

LED

PCB chaining

Characteristics

- Small footprint design, height of only 2 mm
- Solid mechanical and electrical connection
- Cost saving through single-component connection
- Easy processing without soldering
- Individual pin configuration possible



VarPol

High-quality Pin Headers and Socket Strips

Key Features

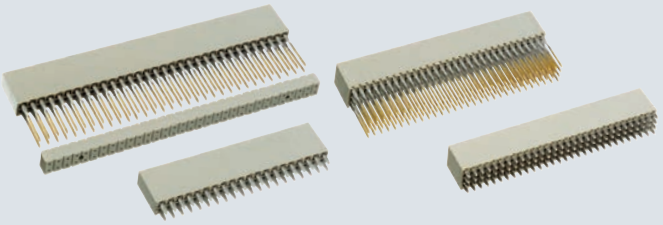
Types pin header	Straight & angled, 1 and 2 rows
Types socket connector	Straight, 1 and 2 rows
Number of contacts	2 - 108
Pitch	2.54 mm and 2 mm
Termination technology	Press-fit and solder
Termination lengths	3.4 mm - 25 mm
Approvals	UL, RoHS compliant

Applications

Board-to-board from 11.45 mm to 35.45 mm distance
No soldering required

Characteristics

- Wide range of termination lengths available
- Different performance levels:
50 and 200 mating cycles
- Gapless arrangement in a continuous row
- Easy and cost saving processing
- Press-fit zone with Tcom press®



PC/104, PC/104-Plus

Highest Quality for Established Form Factor

Key Features

Types	Female connector straight, 2 and 4 rows
Number of contacts	40, 60, 64, 120
Pitch	2.54 mm and 2 mm
Termination technology	Press-fit and solder
Approvals	UL, RoHS compliant

Applications

PC/104 and PC/104 Plus

Board-to-board distances 15.24 and 22 mm

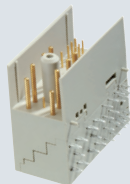
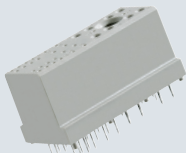


PC/104

Embedded PC Modules

Characteristics

- Combination with VarPol pin headers for board-to-board applications from 11.45 mm thru 35.45 mm
- Different performance levels: 50 and 200 mating cycles
- Individual contact number possible
- Shrouds as accessory available



Advanced TCA[®]

HighSpeed Signal and Power Connectors

Key Features

Types Power	Angled Male and straight Female connector, 8 power and 22 / 26 signal contacts, 16 A operational current
Types Signal	AMC B+ edge card connector 170 contacts, pitch 0.75 mm, 12.5 Gbit/s
Termination technology	Press-fit
Approvals	UL, RoHS compliant

Applications

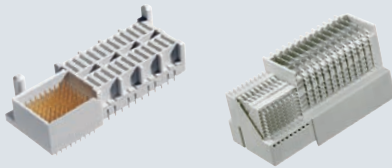
AdvancedTCA, power supplies

Mezzanine high-speed



Characteristics

- Meets the requirements of PICMG
- con:card+ quality seal
- Stamped press-fit zone with Tcom press[®]
- Cost optimized design



Micro TCA[®]

Power Connectors

Key Features

Types Power	Angled power module & straight backplane connector, 24 power and 72 signal contacts, 12 A operational current
Termination technology	Press-fit
Approvals	UL, RoHS compliant

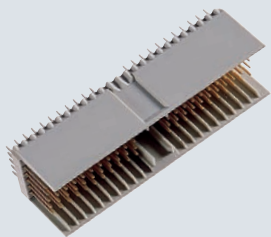
Applications

MicroTCA, power supplies

μTCA[®]

Characteristics

- Meets the requirements of PICMG



hm2.0

Hardmetric 2 mm for Backplane Systems

Key Features

Types	Male connector straight, Female connector angled, each with 5 and 8 rows
Types acc to standard	A, B25, B22, B19, AB25, AB22, AB19, C, D, E, DE, F, L, M, N
Number of contacts	55 - 250
Pitch	2 mm
Termination technology	Press-fit
Data transfer rate	Up to 3 Gbit/s
Approvals	UL, RoHS compliant

Applications

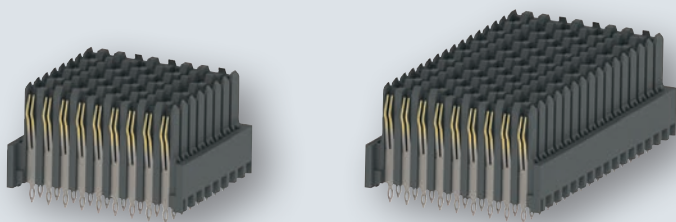
CompactPCI (19-inch technology)

Backplane - daughtercard

CompactPCI[®]

Characteristics

- Broad variety
- Available with or without shielding
- Accessories: Shrouds, coloured Coding Keys
- Special contact arrangements possible, even for low quantities
- Tested acc to IEC 61076-4-101



Velox[®]

High-Speed Backplane Connectors for VPX

Key Features

Types	Female connector straight
Types acc to standard	8-left, center, 16-right, 16-left
Number of contacts	72 and 144
Pitch	1.8 mm
Termination technology	Press-fit
Data transfer rate	10 Gbps
Approvals	UL, RoHS compliant

Applications

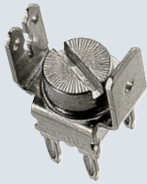
VPX (VITA46)

Backplane high-speed



Characteristics

- Tested acc. to VITA 46, and for intermatability with other manufacturers
- Special contact arrangements possible, even for low quantities
- Reliable dual beam contacts
- Accessories: Guidings



Power Supplies

Power Terminals in Press-fit

Key Features

Types power terminals	With screw or faston connection, 2 rows
Pitch	5.08 mm
Termination technology	Press-fit
Operational current	15 A to 45 A at 20°C
Approvals	RoHS compliant

Applications

Power supply through screw connection or faston contact

Characteristics

- Easy connection of power supply lines
- Individual variation possible, such as angled or cranked terminations
- Easy processing through press-fit
- Accessories: Screws with thread M4 or M5



Assembly Machines & Tools

Precise and Individual Processing for Press-fit

Press-fit Machines

- Machine types: HKP16, HKP20, HKP35
- Press-in force from 16 kN to 35 kN
- With or without insertion force monitoring
- Individual configuration possible:
pneumatic power disconnection, free moving XY-table,
PC control unit, work table adjustable in height

Press-fit tools

- Upper tools for press-in
- Support tools for stabilizing the PCB
- Tool change boards for efficient workflow

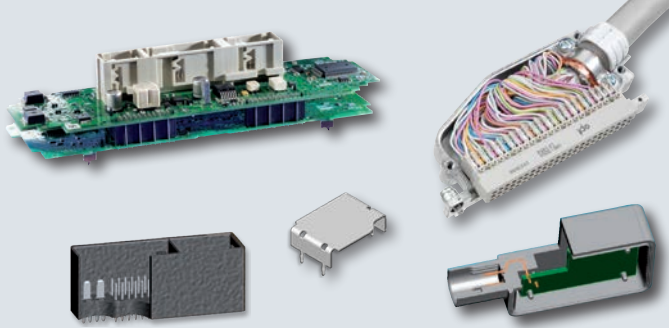
Applications

Press-fit process in mass production

Samples and trial runs, repair

Characteristics

- Press-fit connectors, machines and tools from one source
- Experienced support from the very beginning through mass production
- Individual solutions: ergonomic, efficient
- Fully automated machines for high volume applications
- In-house production of machines and tools



Customer Specific Connectors

Individually Designed and Produced from One Source

Products

- Male & female connectors in press-fit, solder, THR and SMT technology
- Stamped blade & spring contacts, shieldings
- Overmolded and sealed (potted) connectors
- Cable connectors

We offer

- Experienced support in product development
- Production of functional prototypes
- Testing and qualification equipment
- Experienced tool design in-house
- In-house production of all manufacturing steps: stamping, reel-to-reel plating, molding, assembling

Your advantages with ept

- „One-Stop-Supplier“ with over 45 years of experience
- Own tool shop
- Fully vertical integration in manufacturing
- Exceptional flexibility
- Quick responsiveness
- Cost efficient product and process design
- Highest quality



ept

connectors

ept GmbH

Bergwerkstr. 50
86971 Peiting, Germany
Tel. +49 (0) 88 61 25 01 0
Fax +49 (0) 88 61 25 01 700
sales@ept.de
www.ept.de

ept, inc.

1624 Ashton Park Dr.
South Chesterfield, VA 23834, USA
Tel. 800 323 2568
Tel. +1 804 530 0820
Fax +1 804 530 0837
sales@eptusa.com
www.eptusa.com

ept electronic precision technology (Shanghai) Ltd.

6F Building 37, No. 333 Qin Jiang Road
Shanghai, P. R. China
Post code: 20 02 33
Tel. +86 (0) 21-54 26-09 88
Fax +86 (0) 21-64 95-39 49
sales@eptcn.com
www.eptcn.com

www.ept.de